



STARK COUNTY INFLUENZA SNAPSHOT, WEEK 10

Week ending March 13, 2010. With updates through 03/21/2010.

All data are preliminary and may change as more reports are received.

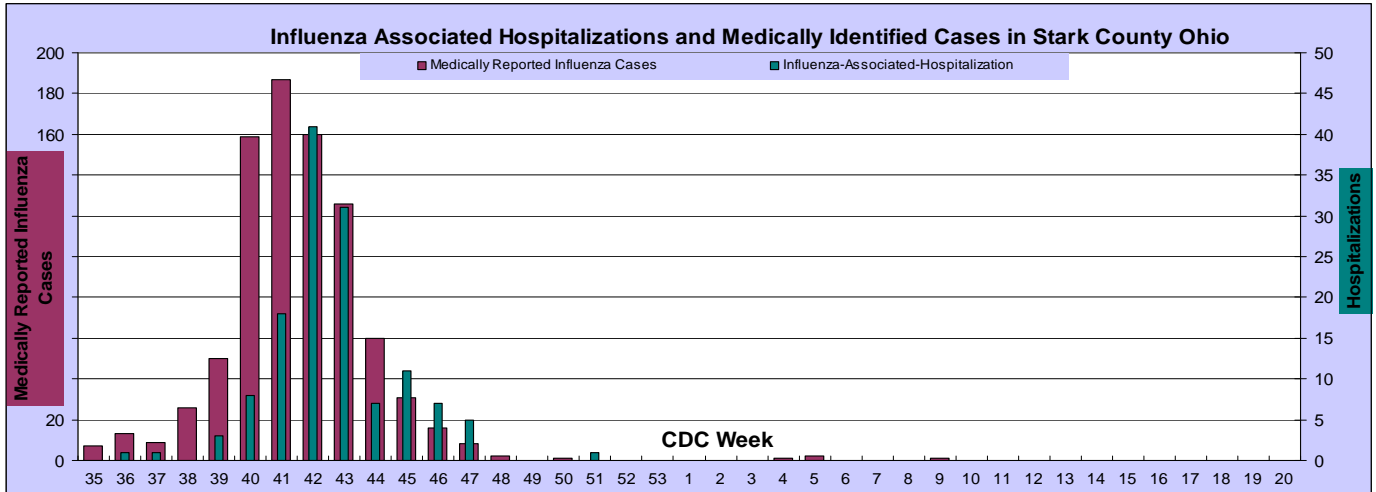
During week 10, (March 7 – March 13, 2010) several local indicators of influenza-like-illness (ILI) activity decreased in Stark County. State and National ILI activity remained low, with elevated ILI activity observed only in the Southern US.

- No influenza-associated hospitalizations or medically reported cases of influenza were reported this week. (Graph 1)
- 859 medically reported cases of non hospitalized influenza were reported during the current season, along with an additional 134 cases of influenza-associated hospitalization. Thus leading to a total 993 Stark County residents identified as having influenza during the 2009-2010 season. Identification was determined either by confirmation with a rapid influenza test or viral culture.
- Of the 134 influenza-associated hospitalizations reported this season, 45 were confirmed with the 2009 influenza A (H1N1) strain.
- Demographics for the medically reported cases not hospitalized are: average age for this season is 16.7 years with a range of 4 months to 79 years and a median of 11 years, 64% are 5 to 24 years.
- Hospitalized cases ranged in age from ≤ 1 month to 80 years with a median of 37 years. The most affected age group, based on percentage, is 25-50 years at 35%. Young children, aged 0-4 years have been hospitalized at the highest rate, >7 per 10,000 population.
- Reports of Influenza-Like-Illness (ILI), from three Stark County Sentinel Providers, decreased slightly to 0.41% of all patient visits. The National level of ILI visits also **decreased** to 1.7%. The National level remains below the baseline level of 2.3%. (See Graph 2)
- The percentage of visits to emergency departments in Stark County, displaying symptoms consistent with Constitutional and Respiratory (C & R) syndromes, **decreased** to 21.64%. This percentage is below expected for this time of year. The number of total patient visits by Stark County residents to emergency departments **remained steady** at an average of 500 hospital emergency room visits per day, exceeding the 476 visits expected. (See Graph 3)
- Sales of Cough/Cold (C/C) Products dropped an average of 11% from the previous week. Further, sales remained well below expected for this time of year. Similarly, sales of Thermometers also **decreased** and remain below expected for this time of year. (See Graph 4)
- Student absenteeism **decreased** to a median of 3.9% among 74 schools in Stark County. The significant decrease in absenteeism seen this week, and possibly in the upcoming 2 weeks, may be due to scheduled standardized testing. (See graph 5)
- Nationally influenza activity, based on geographic indicators, was only seen in the Southern United States; and once again, there were no states reporting Widespread activity. The state of Ohio remains at **sporadic** geographic influenza activity. Note: this indicator is reported to the CDC by each state and does not describe severity of disease. Sporadic geographic activity is defined as: Small numbers of laboratory- confirmed influenza cases or a single laboratory-confirmed influenza outbreak has been reported, but there is no increase in cases of ILI (See National map)
- Reports of Influenza-Associated pediatric deaths continue to be reported to the CDC, the latest reports were received from Texas and Oklahoma. This season 267 deaths have been reported. (See graph 6)
- Nationally, the CDC identified **> 98%** of cocirculating strains of influenza (seasonal influenza A (H1), A (H3), and 2009 influenza A (H1N1) and influenza B) as 2009 influenza A (H1N1). The remaining cocirculating strains of influenza are influenza B.
- National Pneumonia and Influenza (P & I) Mortality Surveillance **decreased to 7.3%** of all deaths reported through the 122 Cities Mortality Reporting System as due to P & I. This percentage is **below** the epidemic threshold of 7.9% for week 10.

For questions, or to receive this report weekly by email, send requests to either chenning@cantonhealth.org or schanzk@starkhealth.org.

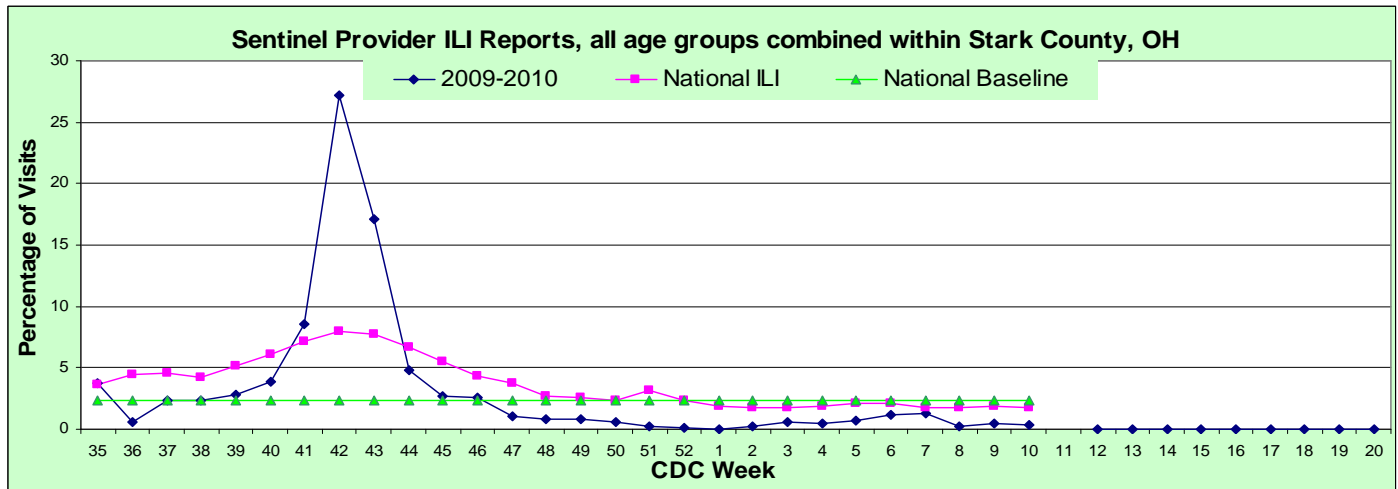
Graph 1: Influenza Cases reported to Local Health Departments

Note: Influenza is only reportable if associated with a hospitalization; therefore, this only represents a small number of actual influenza cases in Stark County.



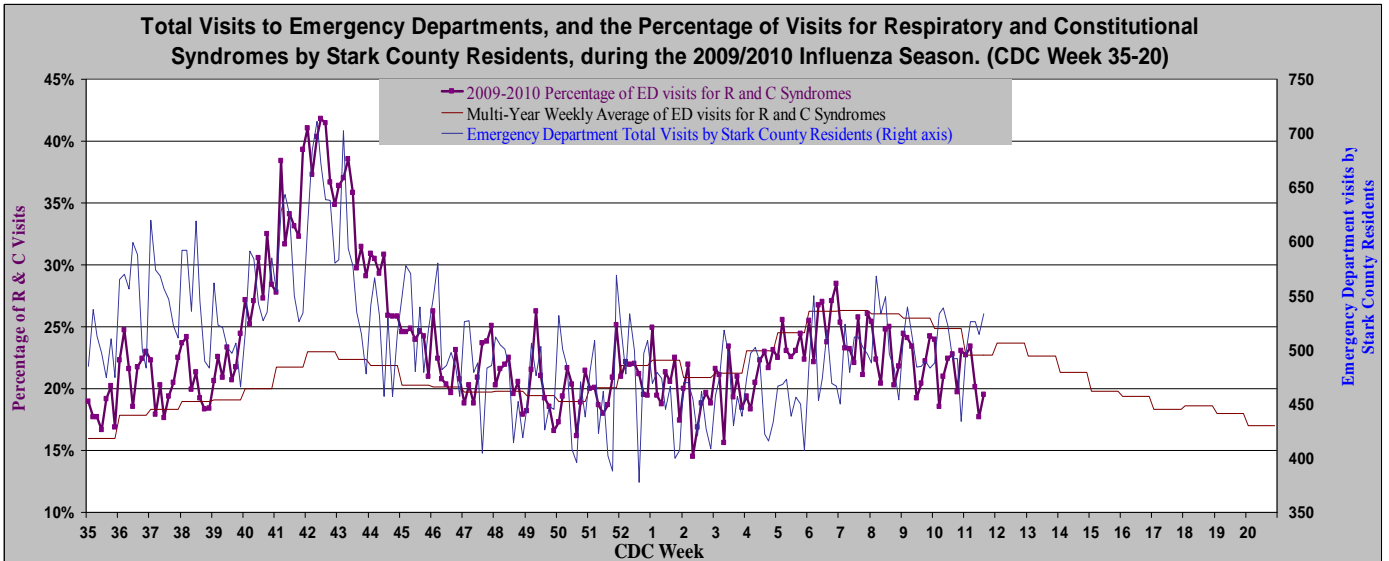
Graph 2: Sentinel Provider Reported Influenza-Like-Illness in Stark County

Sentinel Providers-An influenza sentinel provider conducts surveillance for influenza-like illness (ILI) in collaboration with the state health department and the Centers for Disease Control and Prevention (CDC). Data reported by Stark Counties 4 provider's s are combined with other influenza surveillance data to provide a national picture of influenza virus and ILI activity.



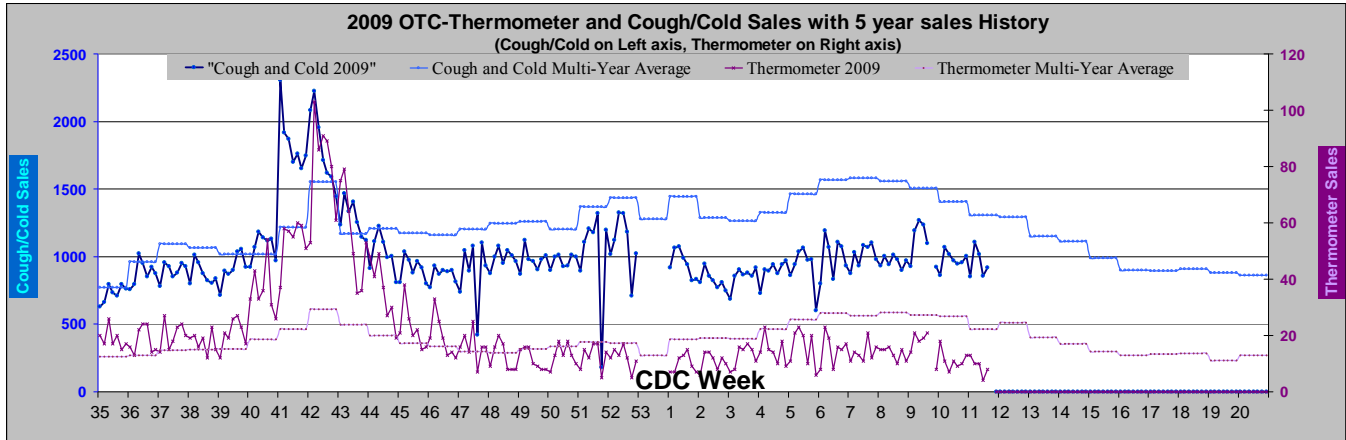
Graph 3: Emergency Department Visits for combined Respiratory and Constitutional Syndromes

(Source Health Monitoring Systems, EpiCenter, hospital patient visit surveillance system)



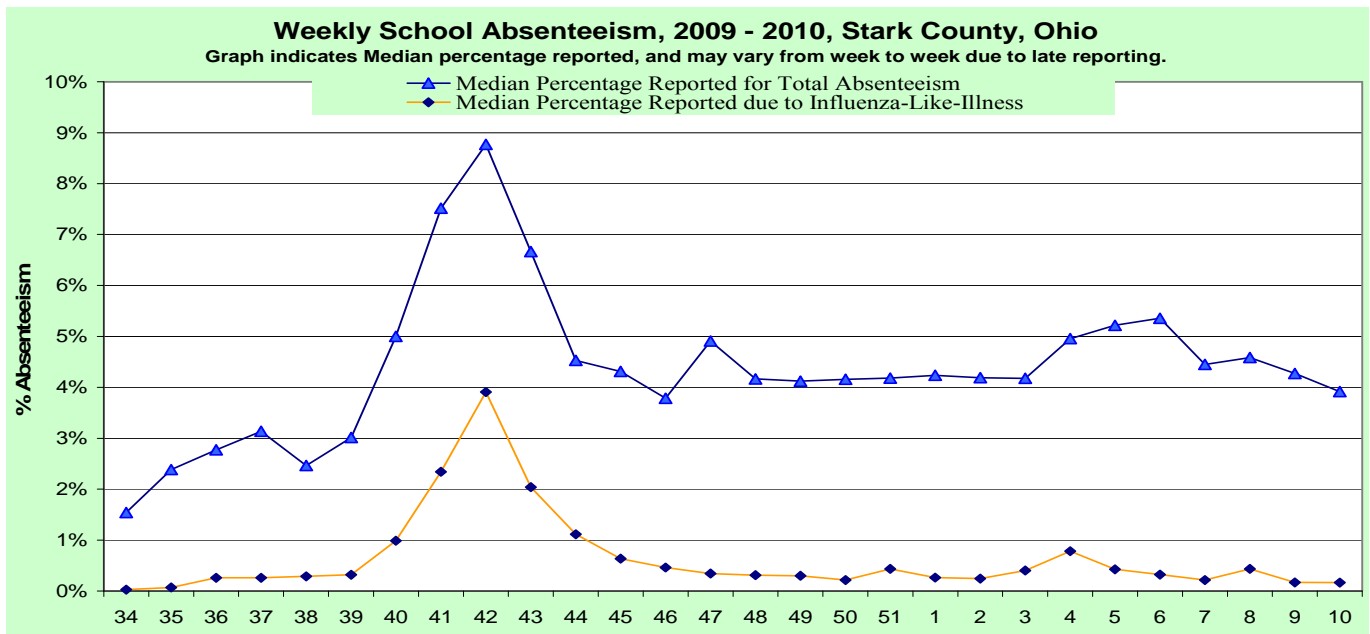
Graph 4: Over-The-Counter Sales of Cough/Cold Product Sales in Stark County Over-The-Counter Sales of Thermometers in Stark County

Source: RODS Real time Outbreak Disease Surveillance, Retail pharmaceutical sales.

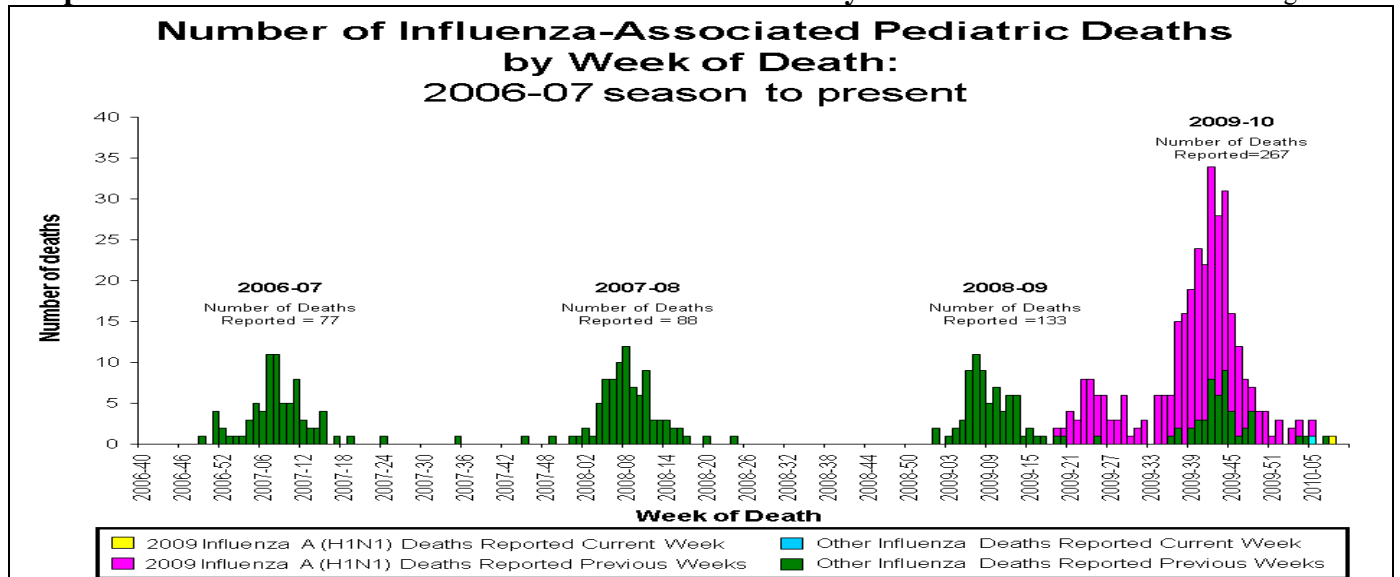


Graph 5: School Absenteeism, 2009-2010, Stark County, Ohio.

(Source: Voluntary reporting by area public and private schools in Stark County Ohio)



Graph 6: Number of Influenza-Associated Pediatric Deaths by Week of Death. Source: www.cdc.gov/flu



Map Weekly Influenza Activity Estimates Reported by State and Territorial Epidemiologists

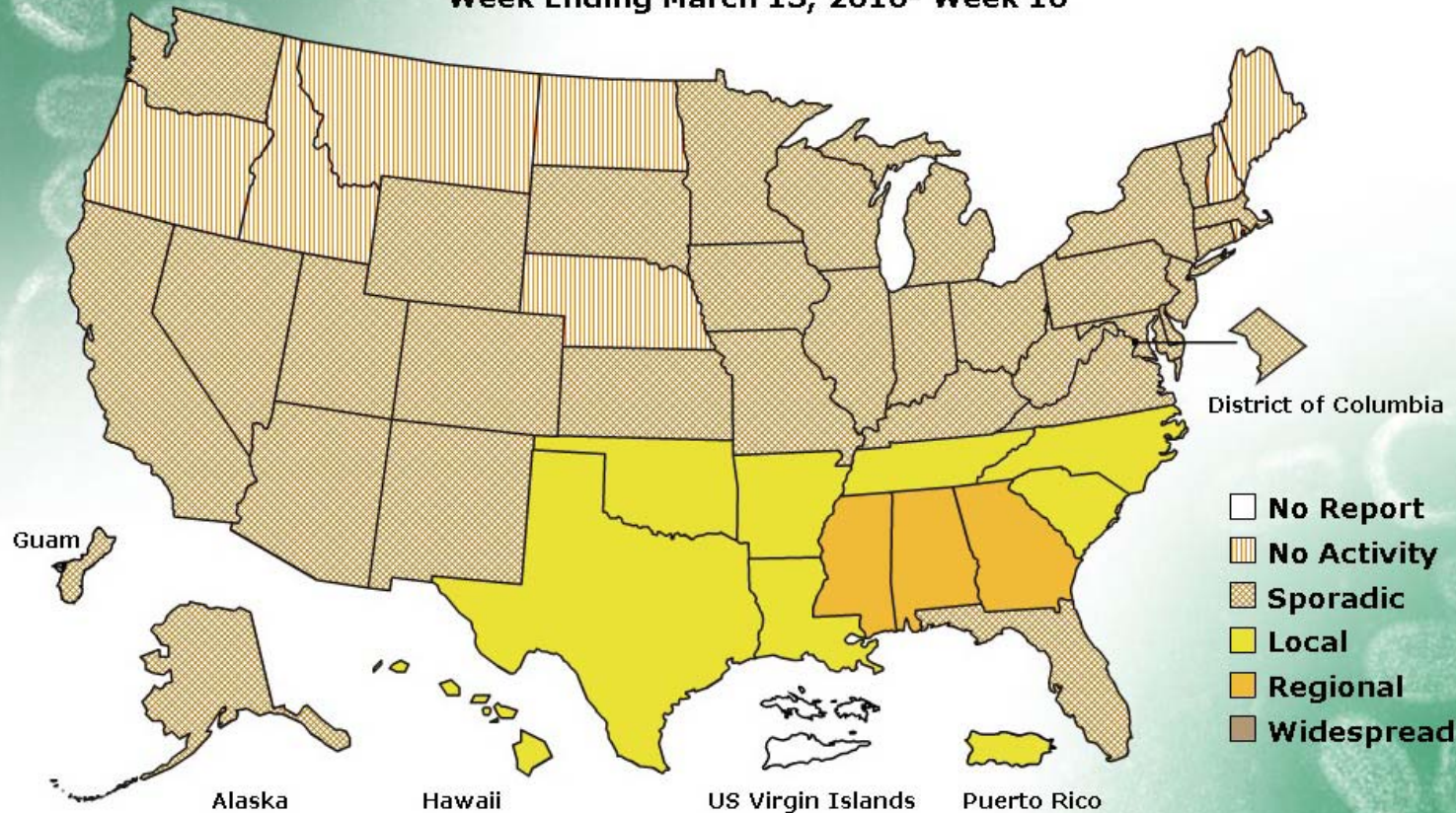
(Source: <http://www.cdc.gov/flu/weekly>)

FLUVIEW



A Weekly Influenza Surveillance Report Prepared by the Influenza Division
Weekly Influenza Activity Estimates Reported by State and Territorial Epidemiologists*

Week Ending March 13, 2010- Week 10



*This map indicates geographic spread and does not measure the severity of influenza activity.